

## 锂离子电池介观尺度光滑粒子水力学模型

曾建邦 蒋方明\*

(中国科学院广州能源研究所先进能源系统实验室, 中国科学院可再生能源重点实验室, 广州 510640)

## A Mesoscale Smoothed Particle Hydrodynamics Model for Lithium-Ion Batteries

ZENG Jian-Bang JIANG Fang-Ming\*

(Laboratory of Advanced Energy System, CAS Key Laboratory of Renewable Energy, Guangzhou Institute of  
Energy Conversion, Chinese Academy of Sciences, Guangzhou 510640, P. R. China)

\*Corresponding author. Email: jiangfm@ms.giec.ac.cn; Tel: +86-20-87057656.

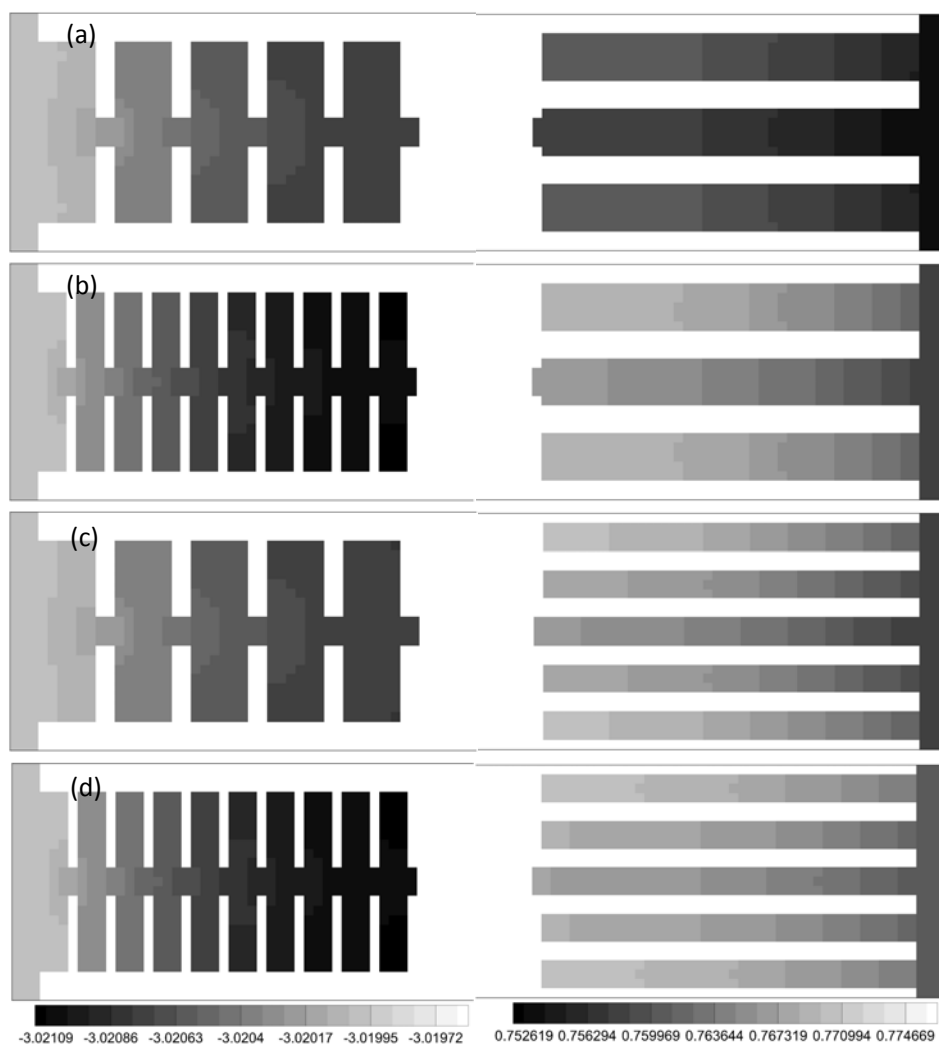
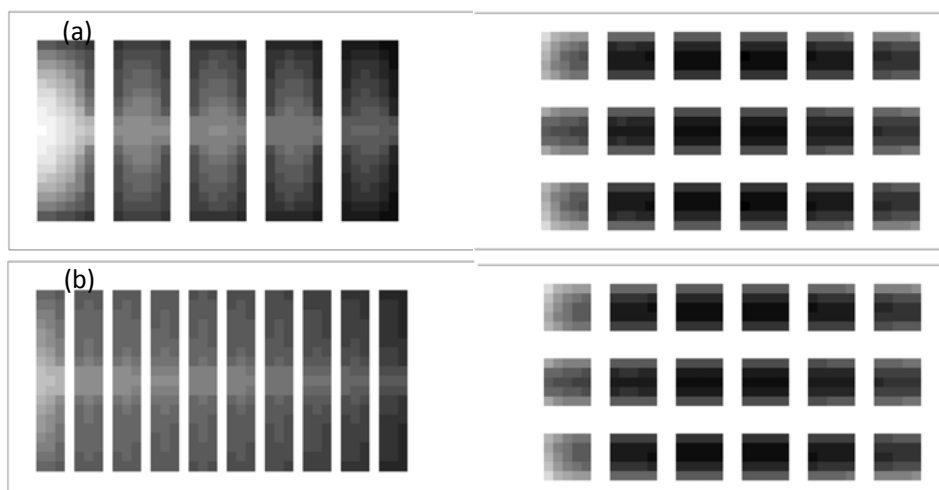


图 S1 放电至 900 s 时固相电势(V, vs.  $\text{Li/Li}^+$ )分布的对比: (a)电池 I; (b)电池 II; (c)电池 III; (d) 电池 IV

Fig.S1 Comparison of the potential (V, vs.  $\text{Li/Li}^+$ ) distribution in solid phases at discharge time instant of 900 s: (a) Battery I; (b) Battery II; (c) Battery III; (d) Battery IV



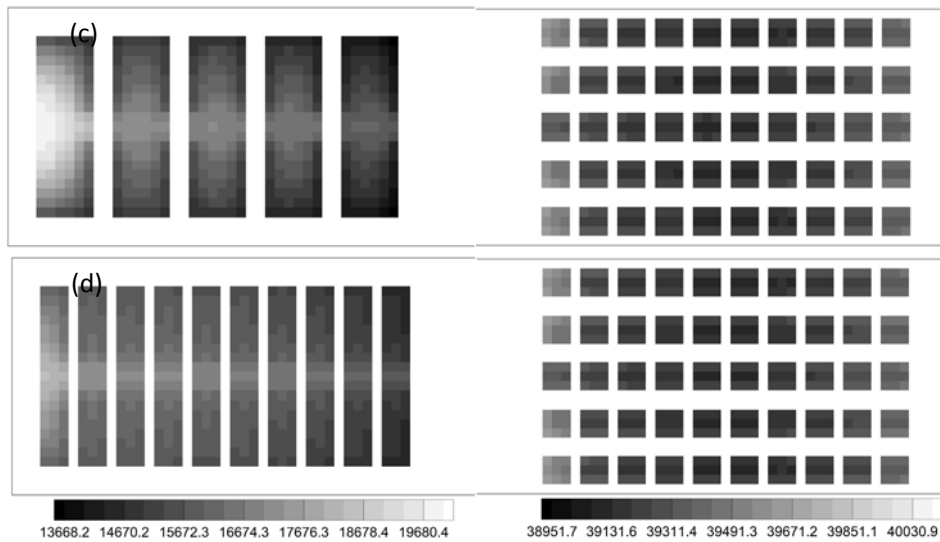
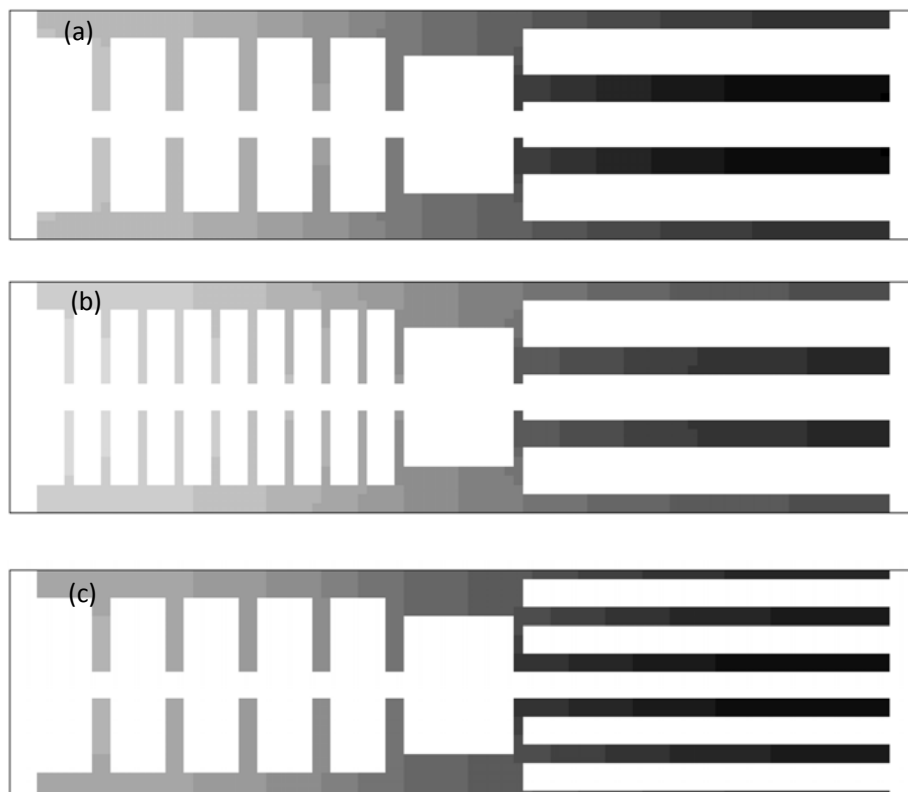


图 S2 放电至 900 s 时固体活性物中 Li 浓度( $\text{mol}\cdot\text{m}^{-3}$ )分布的对比: (a)电池 I; (b)电池 II; (c)电  
池 III; (d)电池 IV

**Fig.S2** Comparison of the Li concentration ( $\text{mol}\cdot\text{m}^{-3}$ ) distribution in solid actives at discharge  
time instant of 900 s: (a) Battery I; (b) Battery II; (c) Battery III; (d) Battery IV



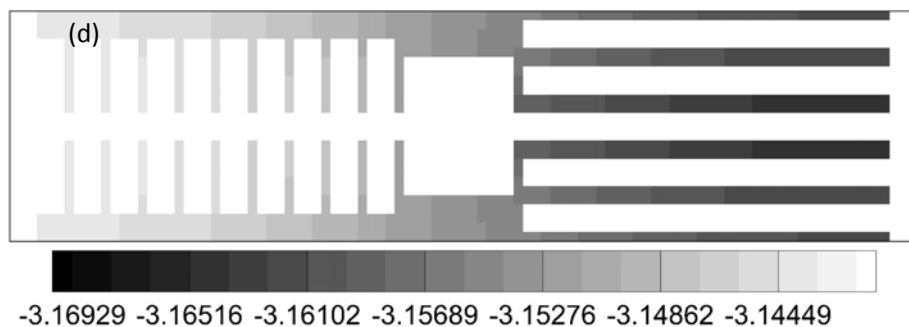


图 S3 放电至 900 s 时电解液电势(V, vs.  $\text{Li/Li}^+$ )分布的对比: (a)电池 I; (b)电池 II; (c)电池 III; (d)电池 IV

Fig.S3 Comparison of the potential (V, vs.  $\text{Li/Li}^+$ ) distribution in electrolyte at discharge time instant of 900 s: (a) Battery I; (b) Battery II; (c) Battery III; (d) Battery IV

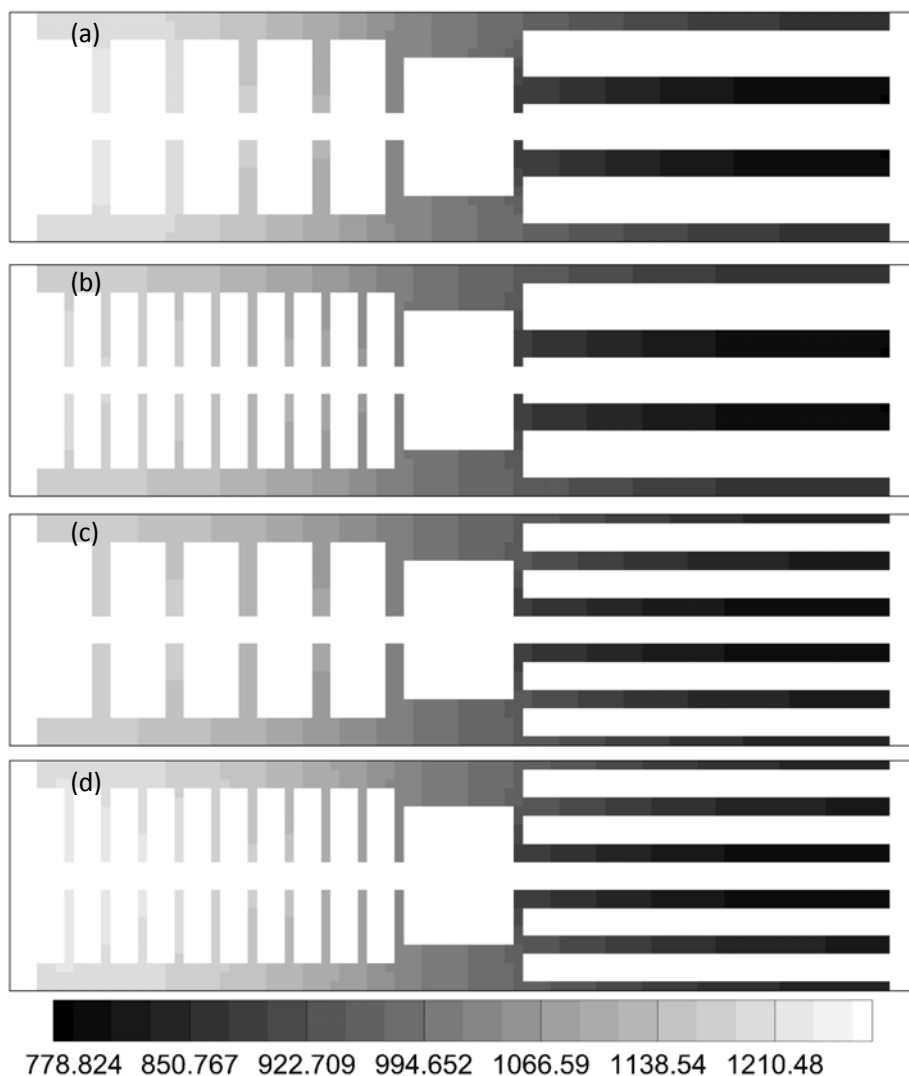


图 S4 放电至 900 s 时  $\text{Li}^+$  浓度( $\text{mol}\cdot\text{m}^{-3}$ )分布的对比: (a)电池 I; (b)电池 II; (c)电池 III; (d)电池 IV

Fig.S4 Comparison of the  $\text{Li}^+$  concentration distribution ( $\text{mol}\cdot\text{m}^{-3}$ ) in electrolyte at discharge time instant of 900 s: (a) Battery I; (b) Battery II; (c) Battery III; (d) Battery IV