

溶剂热法合成锐钛矿型二氧化钛纳米晶的形状演化规律

徐正侠^{1,*} 杨继涛² 刘康¹ 郭小强¹

(¹燕山大学建筑工程与力学学院, 河北 秦皇岛 066004; ²中原工学院能源与环境学院, 郑州 450007)

Shape Evolution Behavior of Anatase Titania Nanocrystals via the Solvothermal Method

XU Zheng-Xia^{1,*} YANG Ji-Tao² LIU Kang¹ GUO Xiao-Qiang¹

(¹College of Civil Engineering & Mechanics, Yanshan University, Qinhuangdao 066004, Hebei Province, P. R. China; ²School of Energy and Environment Engineering, Zhongyuan University of Technology, Zhengzhou 450007, P. R. China)

*Corresponding author. Email: xuzhengxia@ysu.edu.cn; Tel: +86-13930373102.

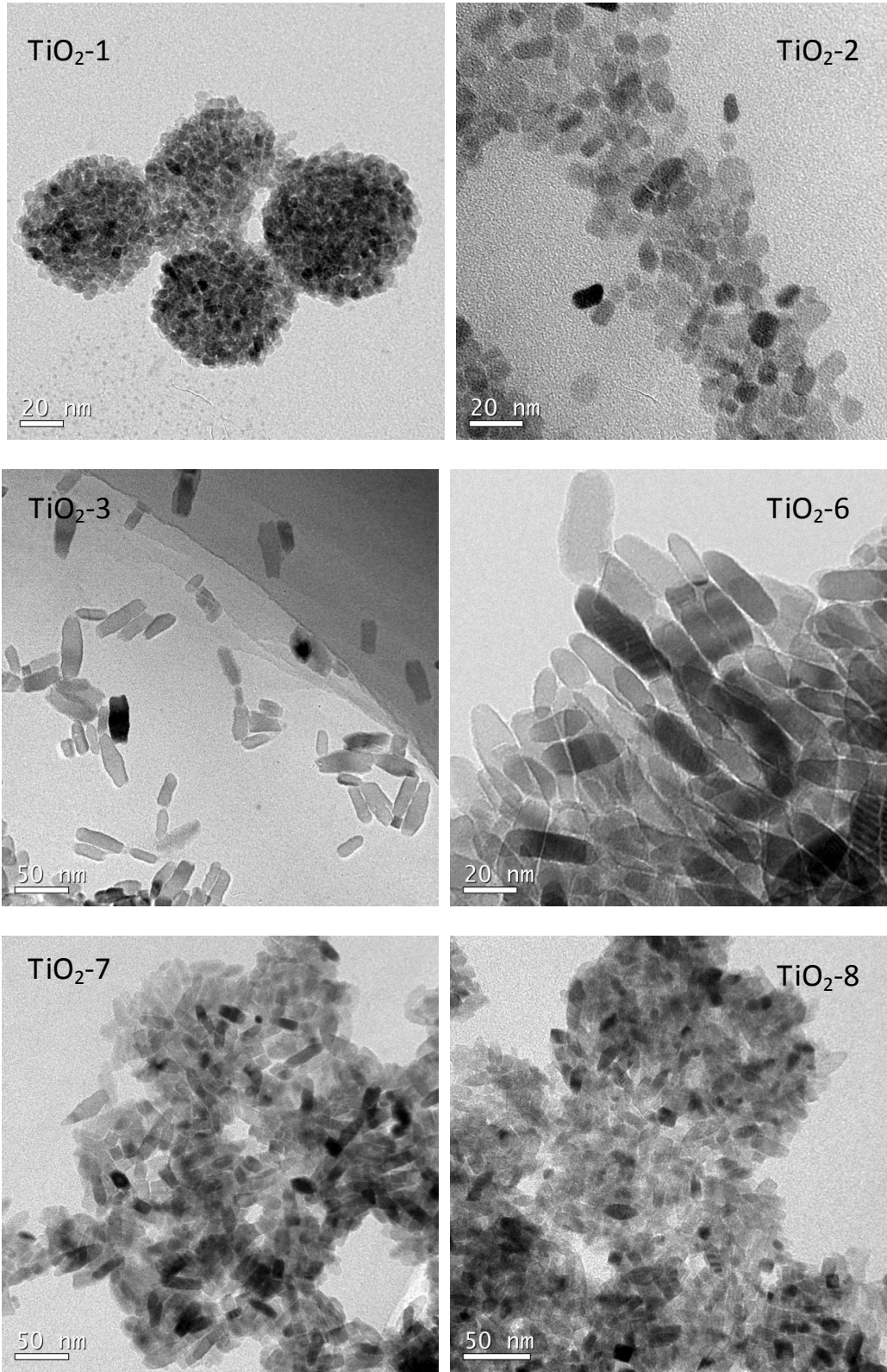
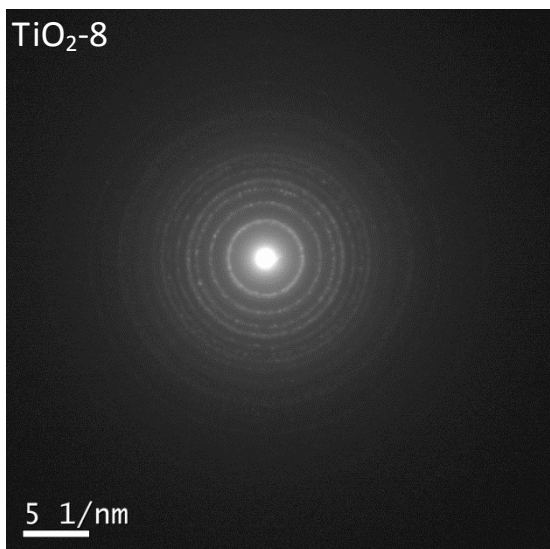
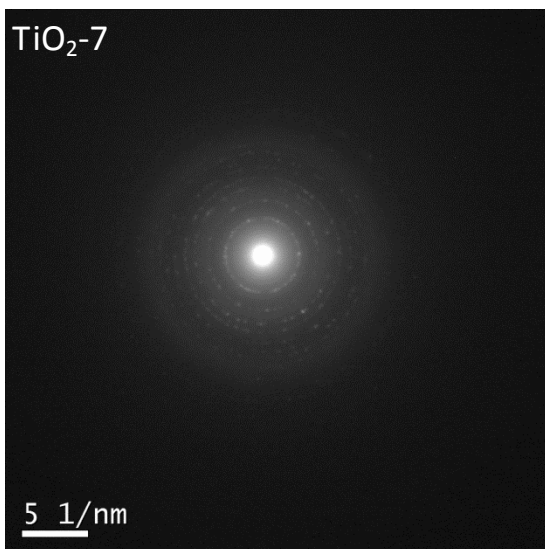
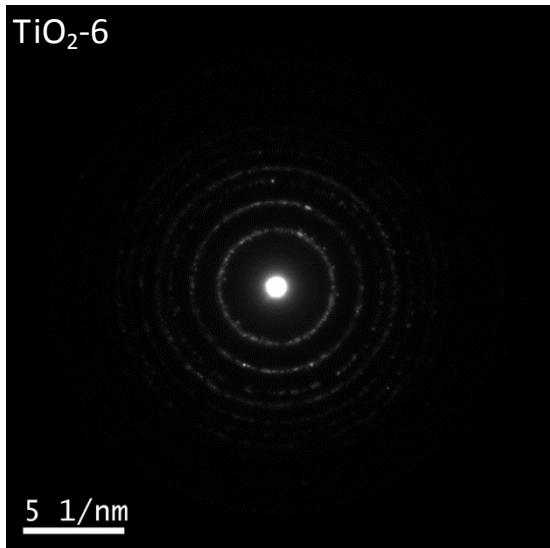
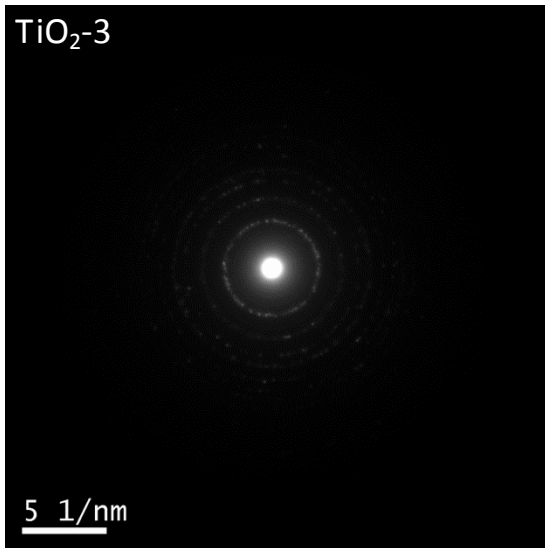
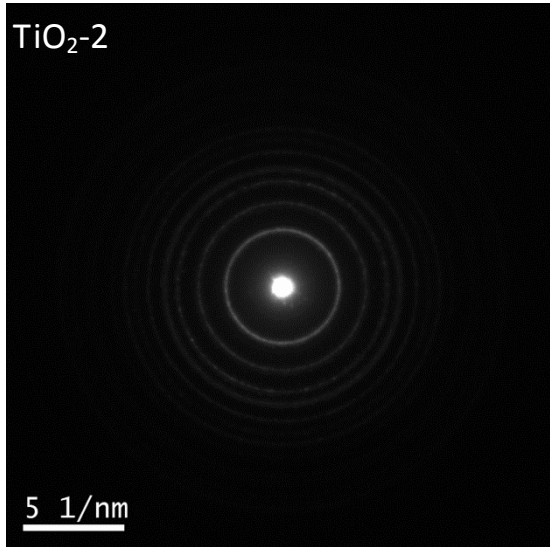
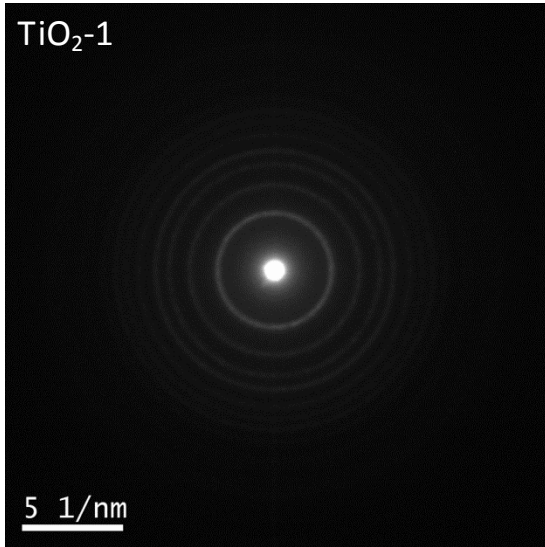


图 S1 样品的 TEM 图
Fig.S1 TEM images of the samples



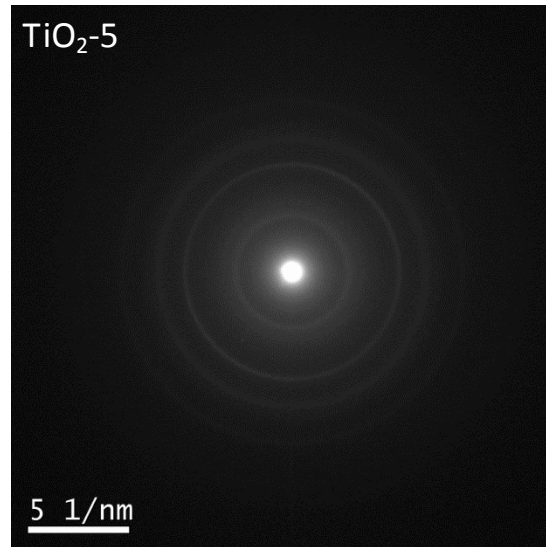


图 S2 样品的 SAED 图
Fig.S2 SAED patterns of the samples