

生物质羟基磷灰石作为模板制备三维石墨烯

王可心¹, 史刘嵘¹, 王铭展¹, 杨皓², 刘忠范^{1,3,*}, 彭海琳^{1,3,*}

¹ 北京大学化学与分子工程学院, 分子动态与稳态结构国家重点实验室, 北京分子科学国家实验室, 纳米化学研究中心, 北京 100871

² 北京大学前沿交叉学科研究院, 北京 100871

³ 北京石墨烯研究院, 北京 100095

Biomass Hydroxyapatite-templated Synthesis of 3D Graphene

WANG Kexin¹, SHI Liurong¹, WANG Mingzhan¹, YANG Hao², LIU Zhongfan^{1,3,*}, PENG Hailin^{1,3,*}

¹ Center for Nanochemistry (CNC), Beijing National Laboratory for Molecular Sciences, State Key Laboratory for Structural Chemistry of Unstable and Stable Species, College of Chemistry and Molecular Engineering, Peking University, Beijing 100871, P. R. China.

² Academy for Advanced Interdisciplinary Studies, Peking University, Beijing 100871, P. R. China.

³ Beijing Graphene Institute (BGI), Beijing 100095, P. R. China.

*Corresponding author. Email: zfliu@pku.edu.cn (L.Z.); hlpeng@pku.edu.cn (P.H.).

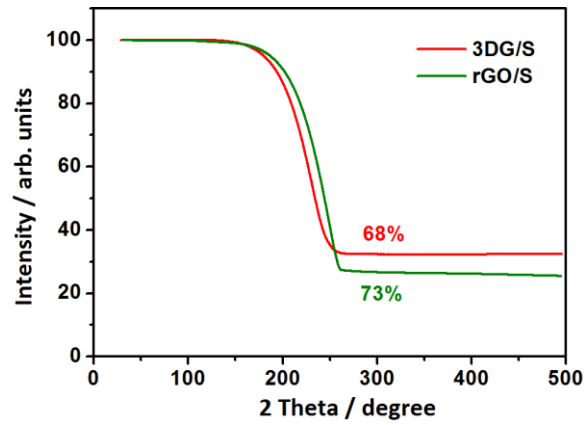


Fig. S1 TGA test of 3DG/S and rGO/S in Ar atmosphere.

The sulfur mass ratio of 3DG/S and rGO/S are 68% and 73% separately.

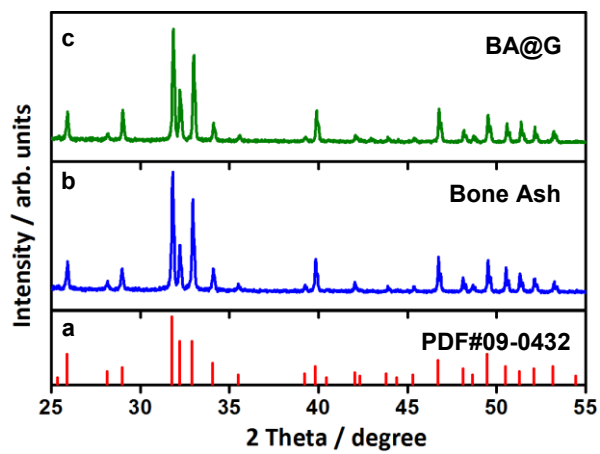


Fig. S2 (a) PDF standard card of hydroxyapatite. XRD pattern for (b) bone ash and (c) BA@G.

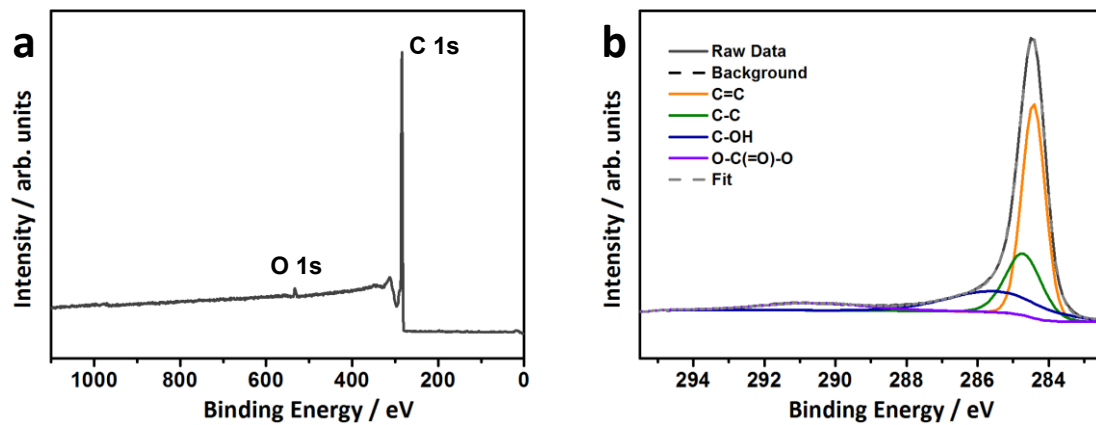


Fig. S3 XPS spectrum of 3DG, (a) full spectrum and (b) C 1s spectrum.

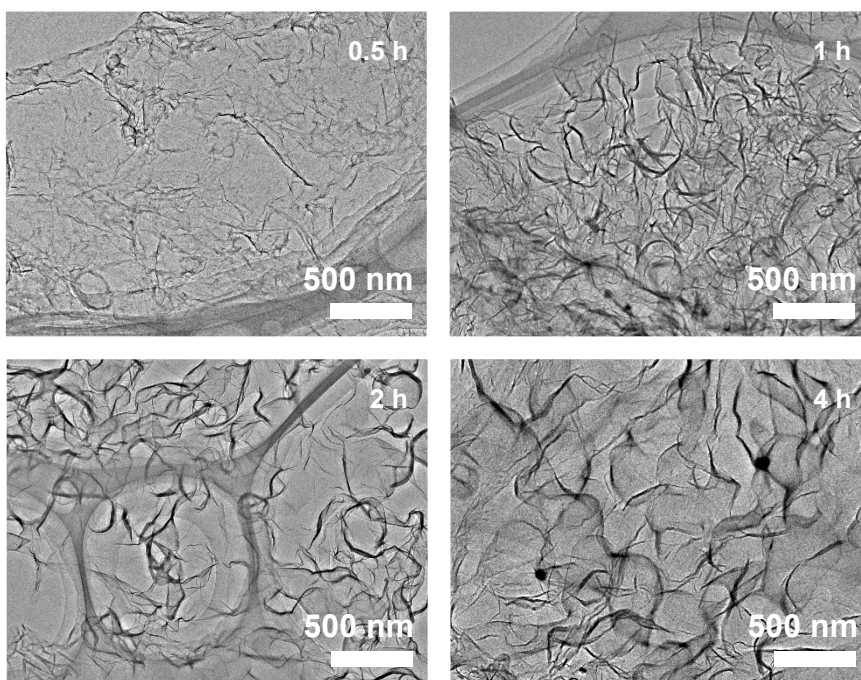


Fig. S4 TEM images of graphene with different growth time of (a) 0.5 h, (b) 1 h, (c) 2 h and (d) 4 h.

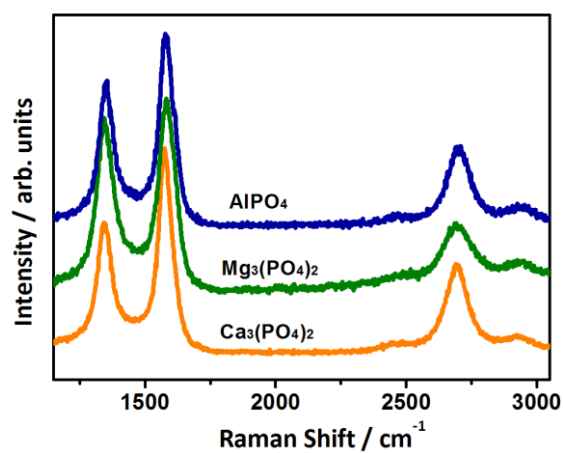


Fig. S5 Raman spectrum of graphene grown on several phosphates templates.

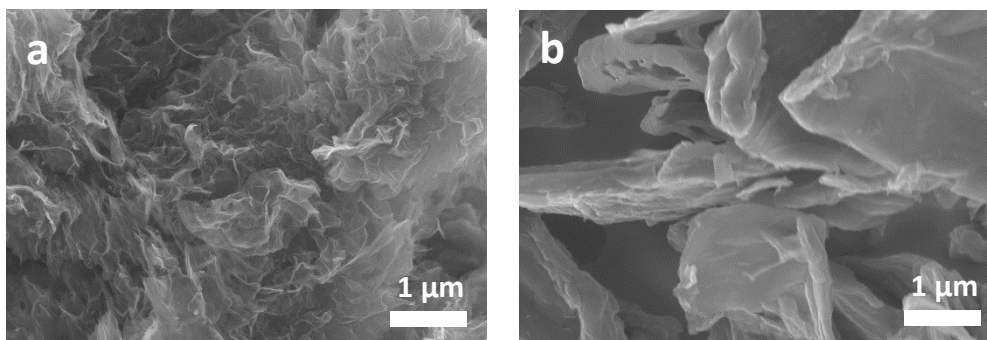


Fig. S6 SEM image of (a) 3DG/S (a) and (b) rGO/S.