

## 聚( $\epsilon$ -己内酯)-多肽共聚物胶束增强抗生素的抗菌活性研究

陈灵珊<sup>1,2,†</sup>, 洪苑秀<sup>1,2,†</sup>, 贺石生<sup>1,\*</sup>, 范震<sup>2,3,\*</sup>, 杜建忠<sup>1,2,4,\*</sup>

<sup>1</sup> 同济大学附属上海市第十人民医院骨科, 上海 200072

<sup>2</sup> 同济大学材料科学与工程学院高分子材料系, 上海 201804

<sup>3</sup> 同济大学高等研究院, 上海 200092

<sup>4</sup> 同济大学, 先进土木工程材料教育部重点实验室, 上海 201804

## Poly( $\epsilon$ -caprolactone)-Polypeptide Copolymer Micelles Enhance the Antibacterial Activities of Antibiotics

Lingshan Chen<sup>1,2,†</sup>, Yuanxiu Hong<sup>1,2,†</sup>, Shisheng He<sup>1,\*</sup>, Zhen Fan<sup>2,3,\*</sup>, Jianzhong Du<sup>1,2,4,\*</sup>

<sup>1</sup> Department of Orthopedics, Shanghai Tenth People's Hospital, Shanghai 200072, P. R. China.

<sup>2</sup> Department of Polymeric Materials, School of Materials Science and Engineering, Tongji University, Shanghai 201804, P. R. China.

<sup>3</sup> Institute for Advanced Study, Tongji University, Shanghai 200092, P. R. China.

<sup>4</sup> Key Laboratory of Advanced Civil Engineering Materials of Ministry of Education, Tongji University, Shanghai 201804, P. R. China.

\*Corresponding authors. Emails: jzdu@tongji.edu.cn (J.D.); tjhss7418@tongji.edu.cn (S.H.); fanzhen2018@tongji.edu.cn (Z.F.).  
Tel.: +86-21-69580239 (J.D.).

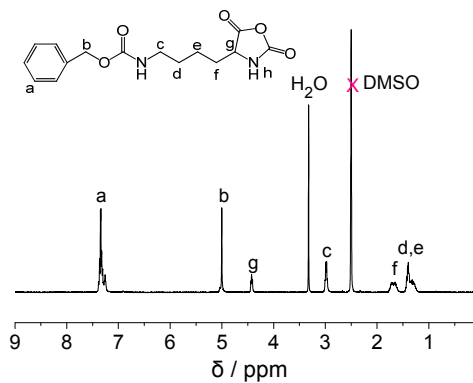


Fig. S1 <sup>1</sup>H NMR spectrum of Z-Lys-NCA in DMSO-*d*<sub>6</sub>.

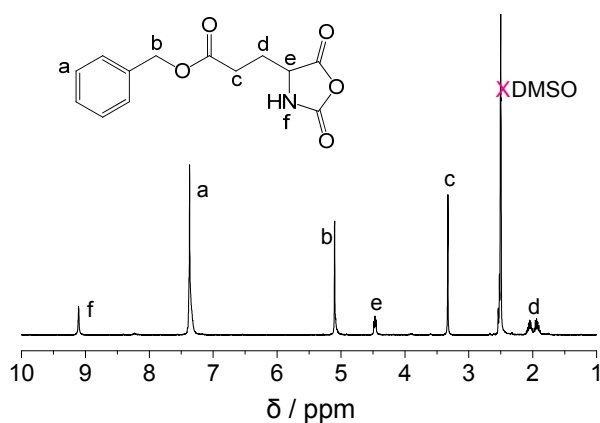


Fig. S2 <sup>1</sup>H NMR spectrum of Bz-Glu-NCA in DMSO-*d*<sub>6</sub>.

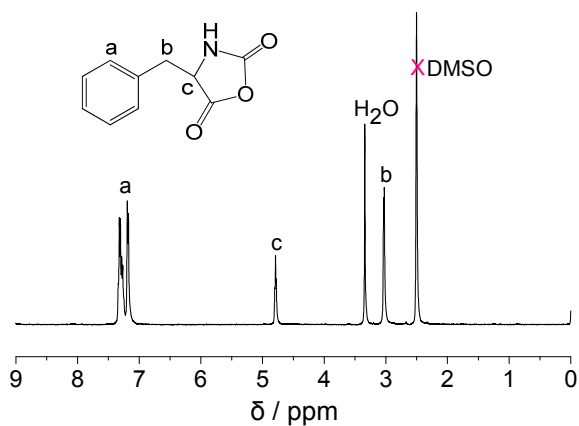


Fig. S1 <sup>1</sup>H NMR spectrum of Phe-NCA in DMSO-*d*<sub>6</sub>.

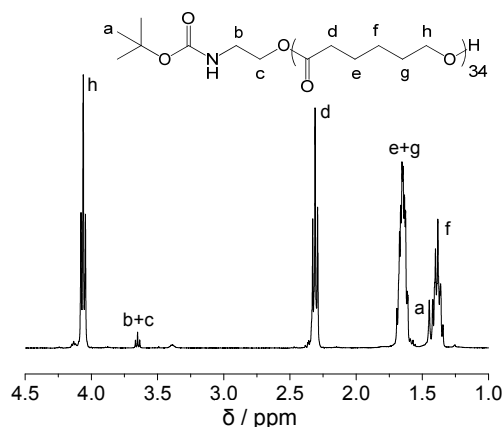


Fig. S4 <sup>1</sup>H NMR spectrum of PCL-NH-Boc in CDCl<sub>3</sub>.

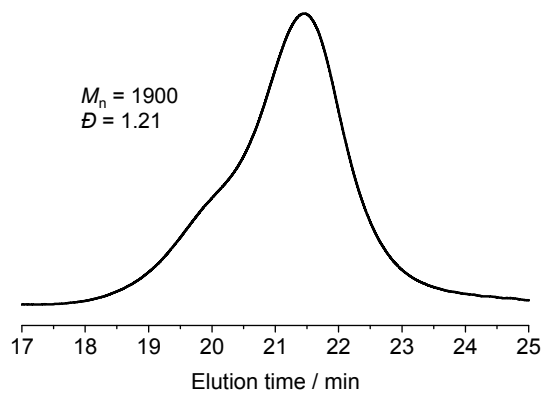


Fig. S5 SEC curve of PCL-NH-Boc in DMF.

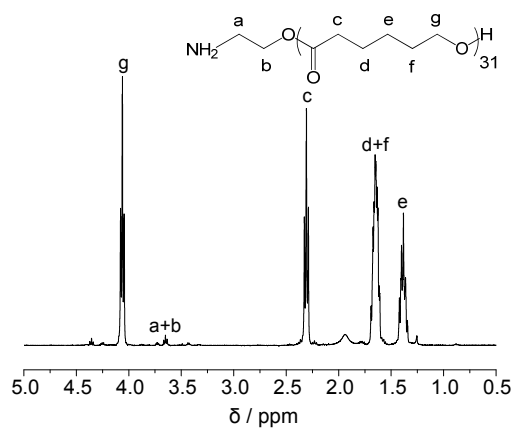


Fig. S6  $^1\text{H}$  NMR spectrum of PCL-NH<sub>2</sub>.

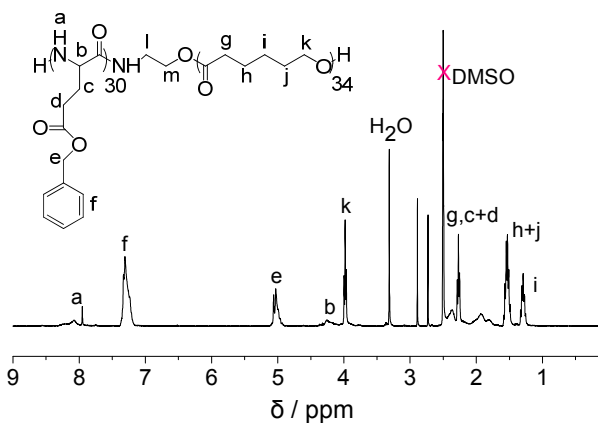


Fig. S7  $^1\text{H}$  NMR spectrum of PCL<sub>34</sub>-*b*-PBLG<sub>30</sub> in DMSO-*d*<sub>6</sub>.

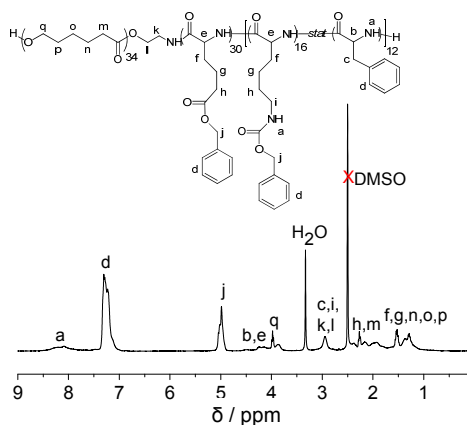


Fig. S8  $^1\text{H}$  NMR spectrum of PCL<sub>34</sub>-*b*-PBLG<sub>30</sub>-P(*Z*-Lys<sub>16</sub>-*stat*-Phe<sub>12</sub>) in DMSO-*d*<sub>6</sub>.

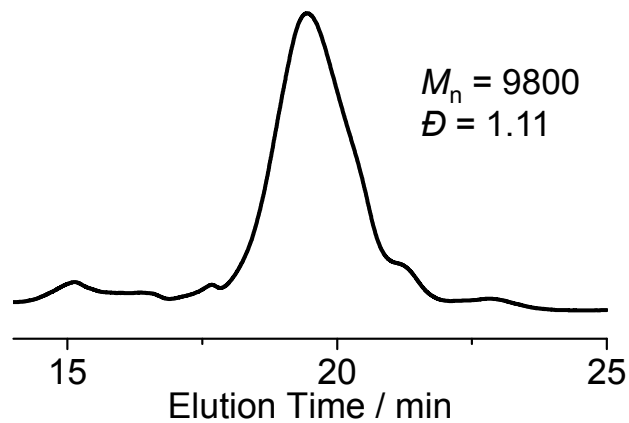


Fig. S9 SEC curve of PCL<sub>34</sub>-*b*-PBLG<sub>30</sub>-P(Z-Lys<sub>16</sub>-*stat*-Phe<sub>12</sub>) in DMF.

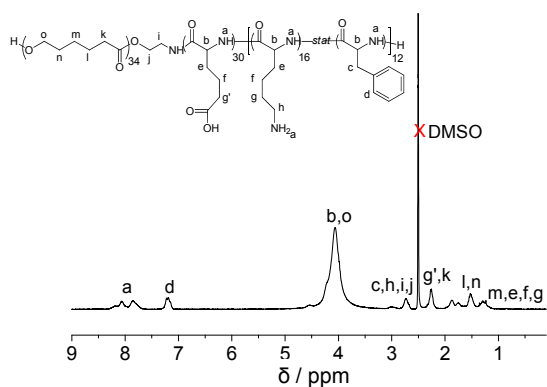


Fig. S10 <sup>1</sup>H NMR spectrum of PCL<sub>34</sub>-*b*-PGA<sub>30</sub>-P(Lys<sub>16</sub>-*stat*-Phe<sub>12</sub>) in DMSO-*d*<sub>6</sub>.

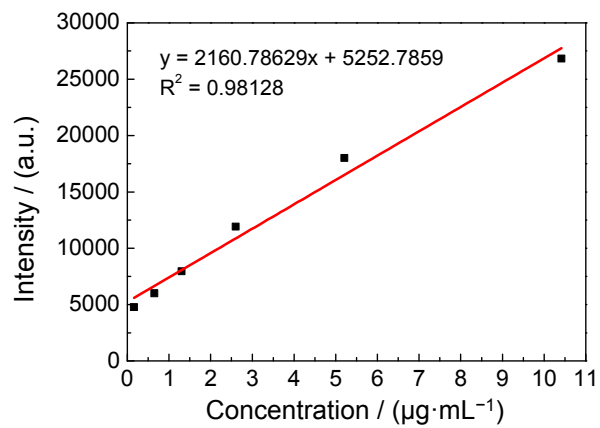


Fig. S11 Calibration curve of aqueous tobramycin solutions.