

溶剂工程调控钙钛矿薄膜中 PbI_2 和 $\text{PbI}_2(\text{DMSO})$ 的形成

查昊送^{1,2,†}, 张连萍^{2,†}, 文龙³, 康嘉晨², 骆群^{2,4,*}, 陈沁³, 杨上峰⁵, 马昌期^{2,4,*}

¹ 中国科学技术大学, 纳米学院, 江苏 苏州 215123

² 中国科学院纳米技术与纳米仿生研究所, 印刷电子学部, 江苏 苏州 215123

³ 暨南大学, 纳米光子学研究院, 广州 511443

⁴ 中国科学院纳米技术与纳米仿生研究所南昌研究院, 南昌 330200

⁵ 中国科学技术大学, 材料科学与工程系, 量子信息与量子物理协同创新中心, 合肥 230026

Controllable Formation of PbI_2 and $\text{PbI}_2(\text{DMSO})$ Nano Domains in the Perovskite Films through Precursor Solvent Engineering

Wusong Zha^{1,2,†}, Lianping Zhang^{2,†}, Long Wen³, Jiachen Kang², Qun Luo^{2,4,*}, Qin Chen³, Shangfeng Yang⁵, Chang-Qi Ma^{2,4,*}

¹ Nano Science and Technology Institute, University of Science and Technology of China, Suzhou 215123, Jiangsu Province, P. R. China.

² Printable Electronics Research Center, Suzhou Institute of Nano-Tech and Nano-Bionics, Chinese Academy of Sciences(CAS), Suzhou 215123, Jiangsu Province, P. R. China.

³ Institute of Nanophotonic, Jinan University, Guangzhou 511443, P. R. China.

⁴ Suzhou Institute of Nano-Tech and Nano-Bionics Nanchang, Chinese Academy of Sciences, Nanchang 330200, P. R. China.

⁵ Department of Materials Science and Engineering Synergetic Innovation Center of Quantum Information & Quantum Physics, University of Science and Technology of China, Hefei 230026, P. R. China.

*Corresponding authors. Emails: qluo2011@sinano.ac.cn (Q.L.); cqma2011@sinano.ac.cn (C.M.)

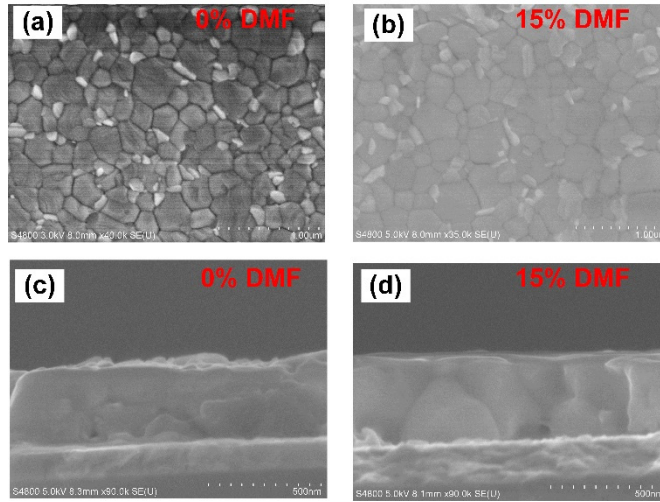


Fig. S1 The SEM images of perovskite films with different content DMF: (a, b) the surface results; (c, d) the cross-section results.

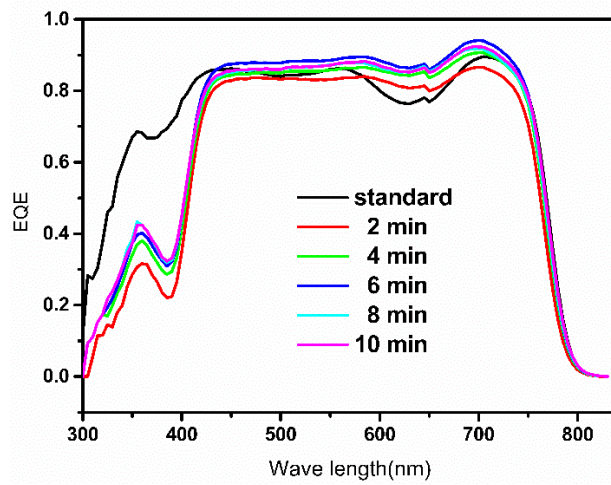


Fig. S2 The EQE curves of PSCs annealed for different time.